



Avenger™ LT

Project _____
 Item _____
 Quantity _____
 CSI Section 11400 _____
 Approval _____
 Date _____

Models

Avenger™ LT



Standard Features

- Automatic fill
- Push button start
- Labyrinth type door design
- Automatic pumped drain for floor and wall drain installations
- Recirculating wash and rinse
- Stainless steel wash/rinse pump
- Electro mechanical components
- Manual override for extended wash and delimiting
- Simplified controls allow easy access for operation and service
- Door safety switch
- Pumped drain
- One (1) each peg and combination rack included
- Above water scrap tray
- Built-in chemical pumps

Optional Features

- Scaltrol
- Water Hammer Arrestor
- Back Panel

Accessory Items

- 36 Compartment Racks 4-1/8", 5-5/8", or 7" (105 mm, 143 mm, 178 mm)
- Combination Rack
- Peg Rack
- Machine stand 6" or 18" high (152 mm or 457 mm)

Specifications

Uses only 1.2 gallons (4.5 liters) of water per rack

Uses 28.8 gallons (109 liters) of water per hour

Cleans 24 racks per hour

Two minute automatic cycle

Powerful 3/4 HP wash pump motor

Fresh water rinse eliminates wash water contamination

Air-insulated between body and stainless steel housing

Unique timer allows the machine to be customized for extended cycle times

304 stainless steel construction



Highway 25E
P. O. Box 1060
Barbourville, KY 40906

Tel: 606-523-9795
Tel: 1-888-800-5672
Fax: 606-523-9196
E-mail: info@jacksonmsc.com

www.jacksonmsc.com
7610-003-34-04 (04/07)



Jackson

Avenger™ LT

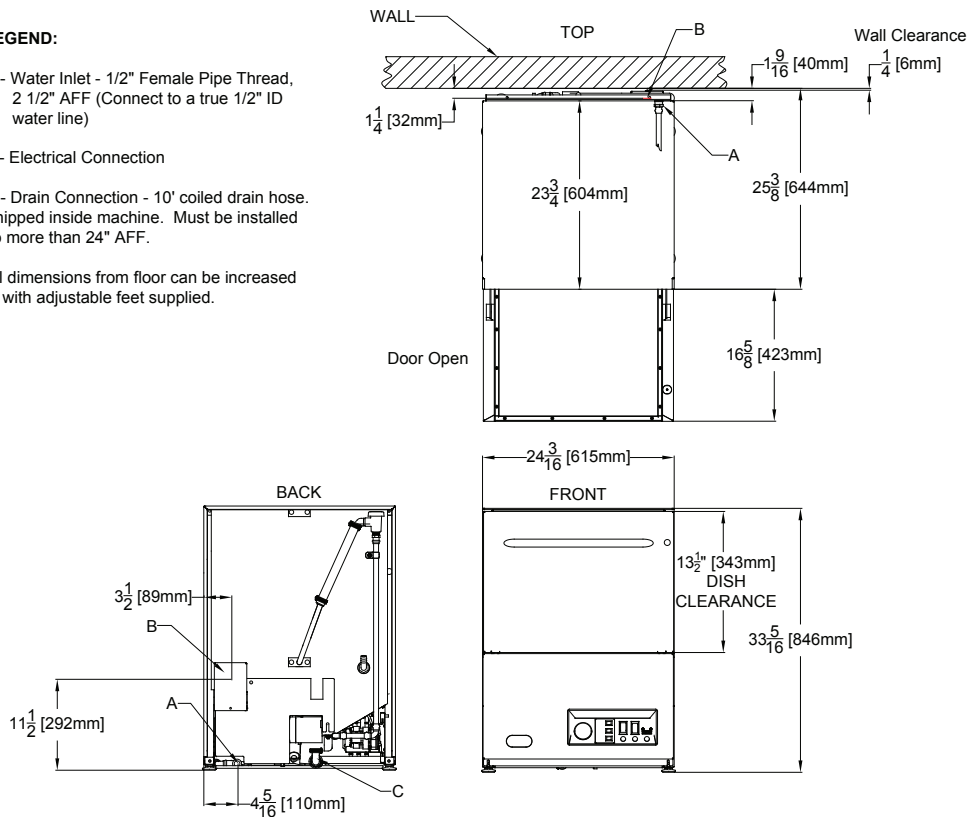
LEGEND:

A - Water Inlet - 1/2" Female Pipe Thread, 2 1/2" AFF (Connect to a true 1/2" ID water line)

B - Electrical Connection

C - Drain Connection - 10' coiled drain hose. Shipped inside machine. Must be installed no more than 24" AFF.

All dimensions from floor can be increased 1" with adjustable feet supplied.



MACHINE DIMENSIONS

INSIDE CLEARANCE HEIGHT	INSIDE CLEARANCE WIDTH	INSIDE CLEARANCE DEPTH	DOOR OPEN DEPTH	WALL CLEARANCE (MINIMUM)
13-1/2" (343 mm)	20" (508 mm)	20" (508 mm)	42" (1067 mm)	1/4" (6 mm)

SHIPPING DIMENSIONS

WEIGHT	CLASS	CUBE	HEIGHT	WIDTH	DEPTH
248 lbs (112 kg)	92.5	19.8 cu. ft.	38" (965 mm)	30" (762 mm)	30" (762 mm)

APPROXIMATE TOTAL LOAD AMPS

115/60/1	10.0
----------	------

ELECTRICAL REQUIREMENTS

Wash pump HP	3/4
--------------	-----

WATER REQUIREMENTS

Gallons per rack	1.2 gal 4.5 liters
Gallons per hour	28.8 gal 109 liters
Flow pressure (PSI)	15 - 25
Waterline size (IPS)	1/2
Drainline size OD	1 3/8

OPERATING CAPACITY

Racks per hour	24
Dishes per hour	600
Glasses per hour	864

OPERATING CYCLE

Wash cycle (Seconds)	56
Drain time (Seconds)	29
Rinse time (Seconds)	35
Total cycle (Seconds)	120

OPERATING TEMPERATURES

Wash	140 °F / 43.3 °C
Rinse	140 °F / 43.3 °C

HOW TO SPECIFY - EXAMPLE:
Avenger™ LT

Highway 25E
P. O. Box 1060
Barbourville, KY 40906

Tel: 606-523-9795

Tel: 1-888-800-5672

Fax: 606-523-9196

E-mail: info@jacksonmsc.com

www.jacksonmsc.com

7610-003-34-04 (04/07)

Enodis